



# WELCOME TO THE 2011 33<sup>RD</sup> ANNUAL BAND CLASSIC

SPONSORED BY  
THE BAND OF BLUE BOOSTER CLUB





# CHARLESTON SOUTHERN SUMMER MUSIC CAMP

Sunday, June 17 - Friday, June 22, 2012



The Horton School of Music is proud to sponsor **Summer Music Camp** for students in grades four through 12. Campers may participate in Band, Choir or Piano Camp during the week-long session. From Sunday afternoon through Friday evening, campers will enjoy a nonstop mix of musical activities. Friday evening concerts will conclude the camp, with performances by all camp ensembles. Join us for this exciting week of **Summer Music Camp** at CSU!

## Senior Band

Grades 9 through 12

## Blue Junior Band

Grades 5 through 8 and have played at least two years

## Gold Junior Band

Played one or two years  
Grades 4 through 8

## Senior Choir

Grades 9 through 12

## Junior Choir

Grades 5 through 8

## Piano Camp

Grades 6 through 12

For Information or Applications, contact the Music Camp office:

text or call 843-88-CSSMC • musiccamp@csuniv.edu

Summer Music Camp • Charleston Southern University • Charleston, SC 29423

## HIGH SCHOOL SENIOR DAY with the CSU MARCHING BUCS!

SATURDAY, NOVEMBER 12, 2011

Rehearsal begins at 10 a.m., pregame at 1 p.m.

Free Admission to CSU vs. Coastal • Sit & perform with the Marching Bucs

Lunch with the band on us • Learn about CSU Music Scholarships

text 843-88-CSUB-1 for more information • [www.csubands.org](http://www.csubands.org)



CHARLESTON  
SOUTHERN  
UNIVERSITY

## HORTON SCHOOL OF MUSIC

BACHELOR OF ARTS  
Instrumental Music Education  
Choral Music Education  
Instrumental Performance  
Piano Performance  
Vocal Performance  
Music Therapy  
Music Worship and Leadership

Student/Faculty Ratio of less than 10-to-1  
Highly Qualified, Approachable Faculty  
Quality Environment for Learning  
High Standards  
Fully Accredited by NASM

### PERFORMING ENSEMBLES

Wind Ensemble  
Symphonic Band  
Marching Bucs  
Woodwind Ensembles  
Brass Ensembles  
Percussion Ensemble  
Jazz Band  
Jazz Combo  
Concert Singers  
Bel Canto  
Singing Buccaneers  
Lyric Theatre  
Worship Ensemble

### Contact:

Dr. Valerie Bullock, Chair  
Horton School of Music  
Charleston Southern University  
Charleston, SC 29423  
1.800.947.7474  
[www.charlestonsouthern.edu/music](http://www.charlestonsouthern.edu/music)  
[music@charlestonsouthern.edu](mailto:music@charlestonsouthern.edu)

## Dear Band Parents and Fans:

We are thrilled about this year's Walterboro Band Classic. On behalf of Colleton County High School, I would like to welcome you and your band to our community. The Walterboro Band Classic, in its 33rd year sponsored By the Band of Blue Booster Club, is one of the largest and longest running events of its kind In South Carolina.

Every effort will be made to provide the best experience possible during your visit. Our NEW Cougar Stadium is state of the art and I know you will enjoy seeing and hearing your band perform in one of the finest high school stadiums in South Carolina.

We have a great panel of judges for this year's show. We will use the SCBDA scoring system. Our panel will give you very helpful comments as you prepare for the rest of the season.

Marshall Kirby – Spartanburg, South Carolina – Music Performance

Randall Williams – Summerville, South Carolina – Music Effect

Chris Frick – Indianapolis, Indiana– Visual Execution

Jay Poole – Archdale, North Carolina – Visual Effect

Jami' Fennell - Atlanta, Georgia - Percussion

Rickey Langdale – Rock Hill, South Carolina – Color Guard

Casey Chubb – Charleston, SC – Drum Major

All we need is great weather and your band! If we can assist you with anything please feel free to call on our parents to help.

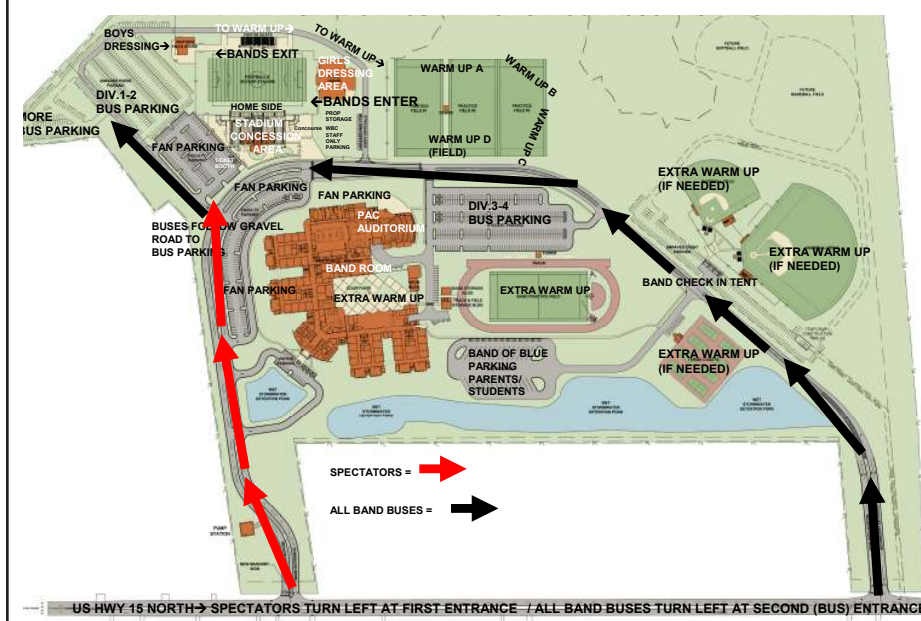
We are looking forward to seeing your band perform. Please call us if you have any questions at (HS) 843-782-0034 or at [TFinigan@lowcountry.com](mailto:TFinigan@lowcountry.com) Let us know if there is anything that we can do for you.

Musically,

*Tom Finigan*

Tom Finigan, Director of Bands  
Colleton County High School  
"The Band of Blue"

## Walterboro Band Classic Map of New Colleton County High School Cougar Stadium



# PERFORMANCE TIMES

	School Name	Director	Warm-Up	Area	Gate	Perform
<b>Class A</b>	Bluffton	Anthony Granquist	11:45 - 12:30	A	12:40	12:45
	Battery Creek	Dana Scaglione	12:00 - 12:45	B	12:55	1:00
	North	Deedra Wright	12:15 - 1:00	C	1:10	1:15
	A.C. Flora	T.J. Shank	12:30 - 1:15	FIELD	1:25	1:30
	Edisto	Opheila Darby	12:45 - 1:30	A	1:40	1:45
<b>Div. 1</b>	Lake View	Akeem Downs	1:00 - 1:45	B	1:55	2:00
	Berkeley	Jeff Caplinger	1:15 - 2:00	C	2:10	2:15
	Bamberg-Ehrhardt	J.D. Smith	1:30 - 2:15	FIELD	2:25	2:30
	Wiliston Elko	Gretchen Salomone	1:45 - 2:30	A	2:40	2:45
	Wade Hampton	Joe Meshach	2:00 - 2:45	B	2:55	3:00
<b>Break</b>						3:20
<b>Div. 2</b>	Timberland	P. Brewington	2:40 - 3:25	A	3:35	3:40
	Cane Bay	David Carter	3:00 - 3:45	B	3:55	4:00
	Hanahan	Dr. Gretchen Bowles	3:20 - 4:05	C	4:15	4:20
	James Island	Neville Curtis	3:40 - 4:25	A	4:35	4:40
<b>Break</b>						5:00
<b>Div. 3</b>	Orangeburg-W	Mike McLaine	5:00 - 5:45	B	5:55	6:00
	Goose Creek	Jenny Collins	5:20 - 6:05	C	6:15	6:20
	Fort Dorchester	Susan Bocook	5:40 - 6:25	A	6:35	6:40
	Ashley Ridge	Josh Hinkel	6:00 - 6:45	B	6:55	7:00
	Carolina Forest	Jay Harward	6:20 - 7:05	C	7:15	7:20
	West Ashley	Eddie Shealy	6:40 - 7:25	A	7:35	7:40
<b>Div. 4</b>	Stratford	Edna Grace	7:00 - 7:45	B	7:55	8:00
	Wando	Scott Rush	7:20 - 8:05	C	8:15	8:20
<b>Host</b>	Colleton County	Tom Finigan	7:40 - 8:25	FIELD	8:35	8:40
<b>AWARDS</b>			<b>ASAP</b>			<b>9:00</b>

## WESTBURY'S **ACE** HARDWARE

BEST OF LUCK AT THE 33<sup>RD</sup> ANNUAL BAND CLASSIC



- Full Service Hardware
- Full Line Plumbing & Electrical
- Sporting Goods
- Household Supplies
- Paint
- Purina Feed
- Garden Supplies
- Heating & Cooling Supplies



**PET SUPPLIES**



**THE BARN YARD**

FOR ALL YOUR FARM ANIMAL SUPPLIES



**HUNTING SUPPLIES**



**POND STOCKING SUPPLIES**



GET IN. GET HELP. GET ON WITH YOUR LIFE.

1050 BELLS HWY • WALTERBORO • 539-3333  
M-F 8am-6pm • Sat 8am-5pm

## COASTAL CAROLINA UNIVERSITY BANDS



[www.coastal.edu/spirit](http://www.coastal.edu/spirit) [bands@coastal.edu](mailto:bands@coastal.edu) 843-349-6480







**Famous Chicken 'n Biscuits**

**All band members receive 10% off this Saturday only!**

2 pc. dinner combo \$5.00

Family Feast Big Bo Box \$19.99

Walterboro Location Only!!

**GO BIG BLUE!**

**TOGETHER WE SUCCEED**

Teamwork...Partnership...Cooperation... You're Our Neighbor.  
Your hopes and dreams are ours too, so when you come to us for business financing,  
money for a new car, cash for college or some other worthy cause,  
we really understand and want to help!

Loans for Personal, Auto & School Needs Starting as low as \$500

**EASTERN FINANCIAL SERVICES, INC.**

*The Hometown Advantage*

**(843) 549-6353**

217 Robertson Blvd. • Walterboro, SC

 Virginia Roessler  
President

 Ernie Hughes

**GO BIG BLUE!**

**CANNADY AGENCY, INC.**

We Offer Insurance Products:

**Life • Health • Disability • Annuity • Retirement**

305 E. Washington St. • 1-800-922-9453

Mon-Fri 8-5pm • 843-549-1846 • Fax: 843-549-6628



**40 Years Printing**

PO BOX 1516, 407 CARN ST, WALTERBORO, SC • PH. 843-549-5891, FAX. 843-782-3882

WE HAVE CARLSON CRAFT  
**Graduation**  
**ANNOUNCEMENTS**  
Name Cards, Notes  
One Time 10% Off Announcements w/This Ad

Wedding Invitations  
Letterheads & Envelopes  
Business Cards, Carbonless Forms  
Salesbooks, Rubber Stamps  
Truck Door Signs, Plaques

## South Carolina Band Directors Association

### State Marching Committee Etiquette Guidelines for SCBDA Marching Events

Our organization is vast, touching many students and adults throughout the state of South Carolina. It is our responsibility, as professionals, to act accordingly and to require the same professional standards from our students and adults whom we work with. It is this reason that these Guidelines have been devised. It is understood, however, that the majority of our membership carefully follow these standard already. This outline is designed primarily as a guide for new members and to encourage consistency among the entire membership of SCBDA.

### BAND DIRECTORS, ASSISTANT BAND DIRECTORS, AUXILIARY INSTRUCTORS AND STAFF MEMBERS:

1. Each year the Band Division By-laws and Handbook of the SCMEA Musician-must be read and understood by all staff members.
2. The Marching Chairman will be available to answer any questions in the Handbook and the policies contained therein.
3. Directors must instruct staff, students and parents as to their responsibilities-and their expected behavior at each SCBDA event. The director must relay all policies to students and parents.
4. Disrespect and unacceptable behavior will not be tolerated at SCBDA events.
5. The director is responsible for knowing all policies and rules governing SCBDA events.
6. Parents need to understand they are positive role models.
7. Courtesy is expected during all band performances.
8. Rudeness (i.e. booing, heckling) will not be tolerated.
9. Bands should be chaperoned in the visitor stands after performing.
10. Distracting noise ( noisemakers, yelling, cat-calls, airhorns) are not acceptable during any part of a bands performance.
11. Applause, cheering, standing ovations are expected and appreciated forms of recognition for all bands.
12. Comments about other bands should always be positive.

*As band directors we have the ultimate responsibility for our groups and everyone connected with them. It is our job to inform all parents, instructors, and students of all SCBDA policies for all SCBDA events.*

**WE CAN MAKE A DIFFERENCE AND WE MUST DO SO!**

We would like to give a shout out to all  
members of The Band of Blue...

**WE ARE PROUD OF YOU!**

**The Press and Standard**

**COLLETONtoday** 

The Press and Standard





**GO MUTT!**  
**Blow that**  
**Horn!**

Love,  
Mom, Dad & Billy

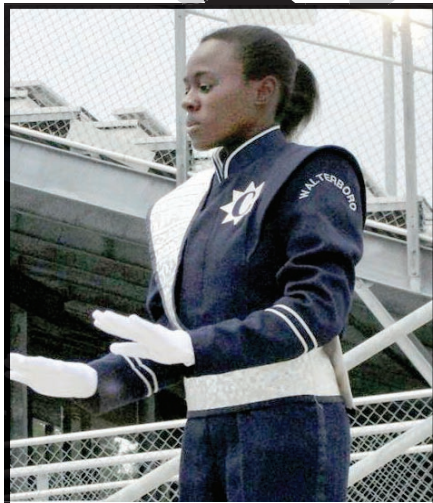
WE ARE  
  
BIG BLUE!



**Amber**  
**Pinckney**  
**and Big**  
**Blue!**

Bishop's Body  
Shop

**SHOUT OUTS**



**Drum Major**  
**AMBER PINCKNEY**  
**Direct Your Band**  
**Just Like We Know You Can!**

Much Love From Your God Parents,  
AL & Myrtle



**DRUM MAJOR AMBER PINCKNEY**

***Make Us Proud by Rockin The Crowd!***

Love - Dolphus , Denise, Hunter & Justin



**Nickolas,**  
**We Are Proud Of You!**  
**Daddy, Sidney & Caleb,**  
**Granny & Papa**



**Drum Major Amber Pinckney**

***Kudos to You &***  
***The Band of Blue***

Michael Williams, Walterboro Public Safety



**GO**  
**AMBER PINCKNEY!**  
**GO**  
**BIG BLUE!**

Bill & Janice Young

**Drum Major**  
**Amber Pinckney**

**Congrats!**

John Terry  
Mr. Magic Detail Shop, LLC  
702 Jefferies Blvd., Walterboro  
843-782-3239

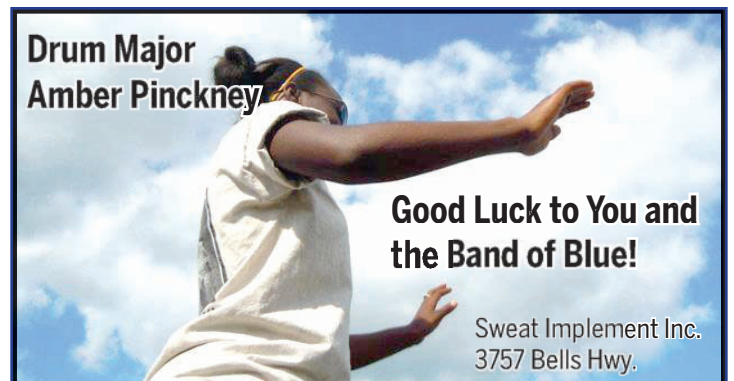


**We Love You**  
**Katie!**  
**You Make Color**  
**Guard Look Fun!**  
**Love,**  
**GMA & GPA**

**Drum Major**  
**Amber Pinckney**

**Good Luck to You and**  
**the Band of Blue!**

Sweat Implement Inc.  
3757 Bells Hwy.





# MEET THE 2011 CCHS BAND OF BLUE





2012 Ford F-150



2012 Ford Explorer



2012 Ford Fusion

**Ford**

**America's**  
**#1** Selling Brand  
**Salutes**  
**Walterboro's #1**  
**Marching Band**  
**GO BIG BLUE!**  
**WALTERBORO FORD**

902 Bells Hwy • 549-5581 • Sales Open Saturday

**Tire King**

**GOOD LUCK BAND OF BLUE**



Owned by US Veteran

All our tires carry a nationwide warranty  
Pick Up & Delivery in the Walterboro Area

**843-549-9995**  
815 N. JEFFERIES, WALTERBORO

**AMERICAN** CELEBRATING 20 YEARS  
CAR CARE CENTERS

**Kendall**

Member: Automotive Oil Change Association

**BBB** ACCREDITED BUSINESS

**Children's Miracle Network**

**GO BIG BLUE! Good Luck this Marching Season!**

PRINT IT.  
PACK IT.  
SHIP IT.  
WE DO IT.

**Palmetto Parcels Plus**

www.neighborhoodpostal.com

Fax Services • Shipping & Packing  
Printing & Copying • Poster Prints • Laminating

MON - FRI 8:30-5:30 • SAT 9:00-1:00

1033 BELLS HWY.  
**549-9299**  
Fax 549-7679

**NEIGHBORHOOD POSTAL CENTERS**

FedEx Authorized ShipCenter

**GENERAL IGA**

**"Where Saving You Money Is The General Idea"**

**GO BIG BLUE!**

601 Wichman St., Walterboro, SC  
**843-549-8585**

We gladly accept all Major Credit Cards, EBT Cards and Debit Cards!





**Drum Major**  
Amber Pinckney

**Flute**  
Cierra Defoor, section leader  
Adrian Brooks  
Tiffany Shider  
Kiana Broughton  
Zahrea Burrison  
Alexis Keen  
Canelia McCray  
Victoria Deal  
Sedrieeka Jarido  
Brianna Caudillo  
Lydia Fee, CCMS  
Erin Strauss, CCMS  
Chyna Robinson, CCMS  
Deonna Frazier, CCMS

**Clarinet**  
Kayce Dew, section leader  
Breyanna Smalls, section leader  
Tiesha Walker  
Chekara Allen  
Katie Warren  
Terralyn Sanders  
Nicoshia Campbell  
Laquetta Wilson  
Brittany Randell  
Asia Brown  
Sara Guerette, CCMS  
Alexis Lawton, CCMS  
Makayla Smalls, CCMS  
Amber Patterson  
Deanna Whitten  
Ashley Lynah  
Dahria Brothers, CCMS  
Jalia Thomas  
Timarah Chisolm  
Steven Davis  
Tavia Wright  
Fantasia Smith

**Bass clarinet**  
Desha Frazier

**Alto saxophone**  
Stacey Williams, section leader  
Lakenya Williams  
Kayla Beach  
Adam Smith  
Symone Major  
Megan Cornatzer  
Brianna Evans  
Malik Rhodes  
Aubre’ Brown, CCMS  
Diamond Brown  
Shakey Clayton

**Mellophone**  
Jacob Watts, section leader  
Jasmine Vance  
Patrick Salley  
Treven Lingard  
Xavier Pope  
Sade Stokes  
Wynter King, CCMS

**Baritone**  
George Steen, section leader  
Andrew Dantzler  
Kaysee Vaught  
Vincent Smith  
Dashniq Wright  
Myron Mays  
Wilbur Jamison  
Gary Joseph  
Tariq Jones  
Britney Woodbury  
Shay McKelvey  
Daniel Steen  
Noah Barco, CCMS  
Chris Lollar, CCMS

**Trumpet**  
Victoria Grimsley, section leader  
Paul Roberts, section leader

Thomas Finigan  
Nick Crosby  
Chris Withrow  
Amber Harrison  
Taylor Crosby  
Trent Bridge  
Kris Encalade  
Jessica Robinson  
Jimi Driggers  
Alicia Mincey  
Lisa Way  
Myasia Steward  
Kempdasia Shider  
Brittany Pye  
Coleman Sams  
Justice Rhodes  
Abria Chisolm

**Sousaphone**  
Antwuan Gantt, section leader  
Cody Heape  
Brandon Bishop  
Charles Shaark  
Terrell Samuels  
Blake Cooke

**Front ensemble**  
Amanda Hughes, section leader  
Treanna Parrish  
LaQuanta Wiggins  
Tamara Shider  
Jasminee Bowers  
Josh Pontoon  
Vashawn Magwood  
Josh Pontoon  
Timamarh Chisolm  
Jamaal Payne

**Keyboard/Synth**  
Amanda Hughes

**Battery Percussion**  
Andrew Floresca  
Kalip Stevens  
William Lolly  
Devonte Drayton  
Anthony Williams  
Dwayne Bright  
Yunis Miller  
Sterling Hicks  
Eric Ferguson  
Malik Pinkney  
Jamal Payne  
Michael Gunnoe

**Colorguard**  
Shoneece Malone  
Kristina Hiers  
Kaitlyn Ritter  
Katellynn Ackerman  
Katherine Judy  
Aaliya Gethers  
Amber Sanders  
Paris Wright  
Shydaishia Murray  
Nola Pontoon  
Breon Grant  
Alex McLaughlin  
Sam Hudson  
Alex Douglas  
Kim Bowman  
Elizabeth Shelly  
Sahkeema Carr  
Shadeara Henderson  
Tayhanna Gethers  
Alexis McCorkle  
KiKi Jenkins  
Tamara Sanders  
Breanna Dupree  
Courtney Padgett  
Jordan Nettles  
Mecca Horton  
Shavounese Henderson  
Kalani Harrison  
Kymberley Conaway  
Katie Buckler  
Nadia Bowlin

**WE ARE PROUD OF YOU BIG BLUE!**

*Best Selection ...*  
**Best Furniture ...**



**DIXIE**  
FURNITURE COMPANY

303 Robertson Blvd.,  
Walterboro, S.C. 29488  
843-549-7068

[www.dixiefurniture.com](http://www.dixiefurniture.com)



Scan for other  
Great Deals!



**Drum Major  
Amber Pinckney**



Congrats to you and the  
**Band of Blue**

S.F.C. Luther Green,  
Colleton County Sheriff's Office

**Drum Major  
Amber Pinckney**



**Good Luck!**  
Dr. Gunther & Kim Rencken



**Drum Major Amber Pinckney**

*Good Luck!*

Mary Anne Cannady  
Cannady Agency  
305 Washington St.  
843-549-1846



Drum Major  
AMBER PINCKNEY  
**Do Your Thing, Band of  
Blue! Go Out With A Bang!**

Love, Auntie  
Sheena's Hair By Demand






**Tori,**  
**Hold Your Horn High,**  
**Blow It Loud And**  
**Make Us Proud.**  
**We Love You,**  
**We Are Proud Of You.**  
**You Go Girl!**  
**Love,**  
**Dad, Mom, Brandon,**  
**Uncle Waine**

**WE ARE**  
  
**BIG BLUE!**

**Drum Major**  
**Amber Pinckney**  
 God Bless You  
 and the  
**Band of Blue**  
 Captain Bob Crawford,  
 Colleton County Sheriff's Office



**(( SHOUT OUTS ))**



**Jacob,**  
 We are proud of you.  
 Make the last one the  
 one to remember!  
 Love you!  
 Mom, William,  
 Jessica, Christina

**Good Luck Amber Pinckney**  
 Paul Haase, Colleton County School Board



**Drum Major**  
**Amber Pinckney**  
**Good Luck!**  
 Pam Roberts  
 Robertson Insurance Agency  
 804 Wichman St., Walterboro  
 843-782-8609



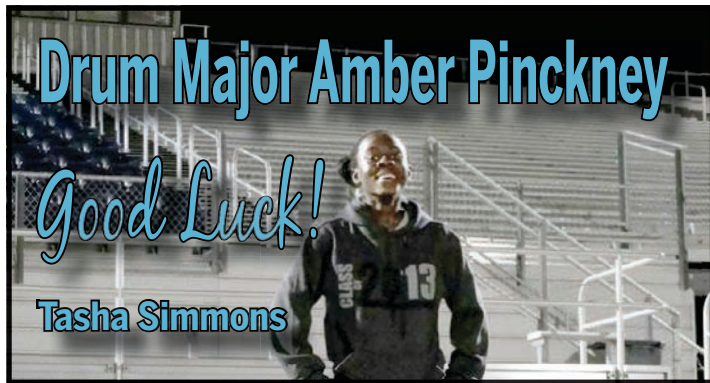
**Drum Major Amber Pinckney**  
 GREAT JOB!  
 McClure's Garage  
 & Wrecker Service  
 333 McClure Ln.  
 Walterboro, SC 29488



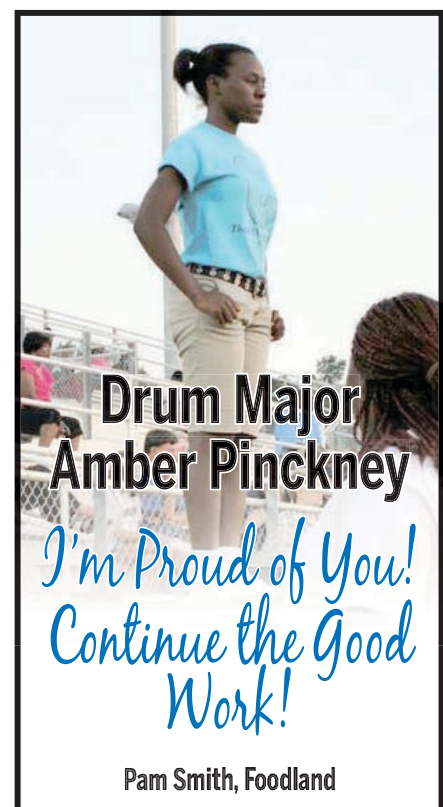
**Go Amber**  
**Pinckney!**  
**Go Big Blue!**  
 Jill



**Drum Major Amber Pinckney**  
**Good Luck!**  
 Tasha Simmons



**Drum Major**  
**Amber Pinckney**  
 I'm Proud of You!  
 Continue the Good  
 Work!  
 Pam Smith, Foodland



**We Love You,**  
 ♪ **Katie!**  
**Always Proud**  
**of You!**  
 Love, ♪  
**Mom & Dad**



**GO**  
**AMBER!**  
 Goodfinds.com



**Drum Major**  
**Amber**  
**Pinckney**  
**Good Luck!**  
**Dr. Harold**  
**Rhodes**  
 and the  
 staff of  
 Colleton  
 Dental  
 Associates





The Band of Blue once again breaks new ground this year with their 2011 show

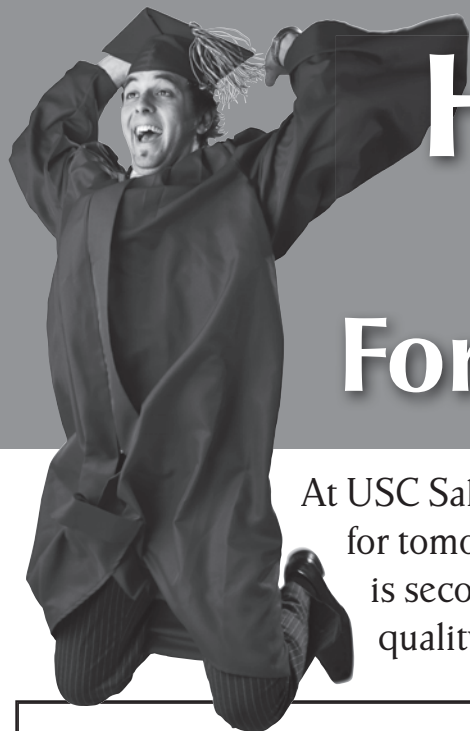
# PICTURES 2K11 - PICTURES AT AN EXHIBITION



The marching show will feature music arranged by Frank Sullivan. Mr. Bob Buckner will write our drill. In 1981, 30 years ago the Band of Blue opened their show with Pictures at an Exhibition. Three decades later and a new generation of Band of Blue musicians will once again perform this timeless classic.

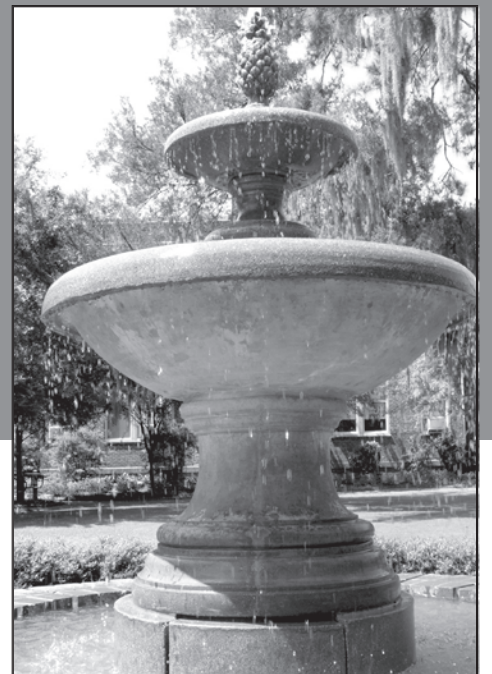
The show will be in 3 sections: Opener, Ballad and Closer and each part lends itself to both musical and visual elements. In the opener you will instantly hear "The Hut of Baba Yaga and the haunting "Promenade" theme throughout this strong and electric opener. The "Ballet of the Young Chicks and Gnomus" adds to the ferocity and playful nature of this movement. All of this is a very "NEW and FRESH" approach to Mussorgsky's classic. The Ballad section we hear the haunting "Old Castle" theme from the front ensemble as it transitions into a wood-wind choir of the Promenade theme. The Closer is a fast paced arrangement of the Great Gate of Kiev.

Through great music and drill, we will tell a story. Our show will be very different! Enjoy!



## Hey, Seniors! Start Planning For Your Future Early!

At USC Salkehatchie we are committed to preparing today's students for tomorrow's jobs with small class sizes and a teaching staff that is second to none. Our affordable tuition allows you to receive a quality education without breaking the bank.



UNIVERSITY OF  
**SOUTH CAROLINA**  
SALKEHATCHIE  
*Start Here. Go Anywhere.*

*Call or come by today for more information*

807 Hampton St. • Walterboro, SC • 843-549-6314

<http://uscsalkehatchie.sc.edu>

*Start Here, Go Anywhere!*





# Statewide Shows

In addition to the Walterboro Band Classic, the oldest contest in South Carolina after state competition, there are other shows each Saturday throughout the month of October. Each week, bands must consider travel time and expenses and select which contest, if any, in which to participate.

Other contests Saturday are: Palmetto Espirit de Corps - Invitational Band Festival at Irmo High School; Boiling Springs Festival of Bands in Spartanburg; Twin City Tournament of Bands, Batesburg-Leesville High School; Socastee Beach Band Blast, Myrtle Beach, and Tribal Classic Band Contest, Cheraw High School.

## The South Carolina Band Directors Association offers the following contest schedules

### **Oct. 1 contests:**

The Henry Laurens Invitational, Laurens High School; Dillon Battle of the Bands; Mustang Classic, Midland Valley; The Lowcountry Invitational Marching Band Festival, Wando High School Stadium, Mount Pleasant, (Band of Blue to compete); James F. Byrnes Tournament of Bands, Duncan; Contest of Champions, Myrtle Beach; Silver Invitational Band Competition, Lexington; Mauldin Tournament of Bands, Mauldin.

### **Oct. 8 contests:**

Green Machine Invitational, Berea; Carolina Forest "Preview of Champions," Myrtle Beach (Band of Blue to compete); Hartsville Tournament of Bands, Hartsville; Lorraine Paris Invitational, Newberry; Olde English Festival of Bands, Rock Hill; Barnwell Music in Motion, Barnwell; Harrison Elliott Tournament of Bands, Landrum.

### **Oct. 15 contests:**

USSBA Carolina Regional, York (Band of Blue to compete); Pride of Pendleton Marching Classic, Pendleton; Bands Across the Savannah, North Augusta; Blue Jacket Fanfare Marching Contest, Aynor; Garden City Classic, Orangeburg; Town of Blythewood Tournament of Bands, Blythewood; Chesnee Eagle Classic, Chesnee; Western Carolina University Tournament of Champions, Culowhee, N.C.

### **The South Carolina State Championships are Oct. 22.**

Upper State 2A/4A are at Boiling Springs High School in Spartanburg. Upper State 1A/3A are at James F. Byrnes High School in Duncan.

Lower State 2A/4A are at West Ashley High School in Charleston (Band of Blue to compete). Lower State 1A/3A are at Hartsville High School in Hartsville.

The South Carolina State Championship Finals are Oct. 29 with 4A/2A finals at Spring Valley High School in Columbia and 3A/1A finals at Batesburg-Leesville High School in Batesburg.

The SCBDA Show Band Festival is at Keenan High School in Memorial Stadium in Columbia and the Annual Warrior Classic is at West Oak High School in Westminster. The Bands of America (BOA) Regional Championship is at the Georgia Dome in Atlanta, Ga.

On Nov. 5, Loris Band Day is Loris and the South Carolina State Championships - 5A Prelims/Finals are at South Carolina State University in Orangeburg. The BOA Grand Nationals are Nov. 10 at Lucas Oil Stadium in Indianapolis, Ind.

**NEW YORK LIFE  
INSURANCE COMPANY  
GOOD LUCK  
BAND OF BLUE!**



David Williamson

FOR MORE INFORMATION CALL:

**843-549-9576**

**800 North Jefferies Blvd., Walterboro, SC 29488**



*The Medicine  
Shoppe®*



***Go Band of Blue!!***

***Pharmacist Witte Bull Jr.***

***1315 N. Jefferies Blvd., Walterboro • 549-9565***





		MUSIC	VISUAL	EFFECT	TOTAL	RANK	YOUR
		40 POINTS	30 POINTS	30 POINTS	OUT OF 100	PLACEMENT	COMMENTS
Class A	School Name						
	Bluffton						
	Battery Creek						
	North						
	A.C. Flora						
Div. 1	Edisto						
	Lake View						
	Berkeley						
	Bamberg-Ehrhardt						
	Wiliston Elko						
Div. 2	Wade Hampton						
	Break						
	Timberland						
	Cane Bay						
	Hanahan						
Div. 3	James Island						
	Break						
	Orangeburg-W						
	Goose Creek						
	Fort Dorchester						
Div. 4	Ashley Ridge						
	Carolina Forest						
	West Ashley						
	Stratford						
	Wando						
Host	Colleton County						
	AWARDS						

Mayor Bill Young and City Council welcome you to Walterboro!

# ANTIQUES ~ ART ~ HISTORY

one hour from Charleston, Hilton Head, and Savannah





## Walterboro

The Front Porch of the Lowcountry

Welcome Center 843.538.4353      [www.WalterboroSC.org](http://www.WalterboroSC.org)

City Council Members:  
 Randy W. Peters • Dwayne Buckner • Charles Lucas • William T. Lohr • Paul N. Siegel • Robert J. (Bobby) Bonds

Pecknel Music Company is proud to support the annual Walterboro Band Classic.

Congratulations to all participating ensembles!

Call on us for whatever you might need, because band is our business and we're here to support you in your pursuit of excellence!

(843) 766-7660

(800) 868-2275



[www.pecknelmusic.com](http://www.pecknelmusic.com)



# PECKNEL

music company



# 3 FOR ALL

PHONE | HIGH SPEED INTERNET | DIGITAL TV

## \$99 A MONTH

plus equipment\*\*



## SAVE WITH PRTC'S NEW "3 FOR ALL" PLAN!

Get Digital TV, Phone and High Speed Internet for only \$99 a month for the first 6 months, plus equipment

### DIGITAL TV:

PRTC offers over 170 channels full of premium programming including over 50 music channels, where service is available\*

### PHONE:

Unlimited local calls with our choice of 10 calling features like Caller ID, Call Waiting, or Call Forwarding!

### HIGH SPEED INTERNET

With PRTC's "Silver" High Speed Internet service you can enjoy getting emails, shopping online, and visit all of your favorite sites!

**AND the 1<sup>st</sup> month of service and installation are FREE!**  
(That's a \$175 Value!)

888-485-1566 • [www.prtc3forall.com](http://www.prtc3forall.com)

With all PRTC services, contracts may be required. Applies only where services are available. Taxes and fees billed separately. \*For Digital TV services only: Additional fees may apply to set-top boxes, HD service, further video upgrades and additions. \*\*After the first 6 months of service, price will convert to the current monthly bundle rate of \$114.99 per month.

  
PALMETTO RURAL TELEPHONE COOPERATIVE, INC.